



7 Roseleigh Gardens, Scaynes Hill, West Sussex, RH17 7PU

£1,400 Per Calendar Month

This well presented, two bedroom terraced house occupies a tucked away position, with spacious sitting/dining room, modern kitchen, two allocated parking spaces and is available now, subject to reference and contract.

The House...

An attractive two bedroom terraced house situated in a private residential close within the popular village of Scaynes Hill. The house is presented in good order throughout and the well proportioned accommodation includes a modern fitted kitchen, bright & airy sitting/dining room and door opening onto the garden, spacious master bedroom with fitted wardrobes, second bedroom with fitted wardrobes and a contemporary fitted bathroom.

Further attributes include neutral decor, double glazing and electric heating.

Outside...

Outside is an easily maintained & sunny south-west facing rear garden while to the front are TWO allocated parking spaces and a gate (private to the close) through to the village park.

The Location...

Roseleigh Gardens is a private, well-kept residential close situated in the heart of Scaynes Hill providing a convenient location for village amenities, including a convenience store, 'The Inn on The Green' public house, St. Augustine's C of E Primary School and the village churches. Scaynes Hill is surrounded by glorious open countryside with plenty of bridleways & paths.

Haywards Heath is easily accessed via the A272 and offers more extensive shopping and leisure facilities including a mainline station, Sainsbury's Superstore, Waitrose and Dolphin Leisure Centre.

Information

Council Tax Band C

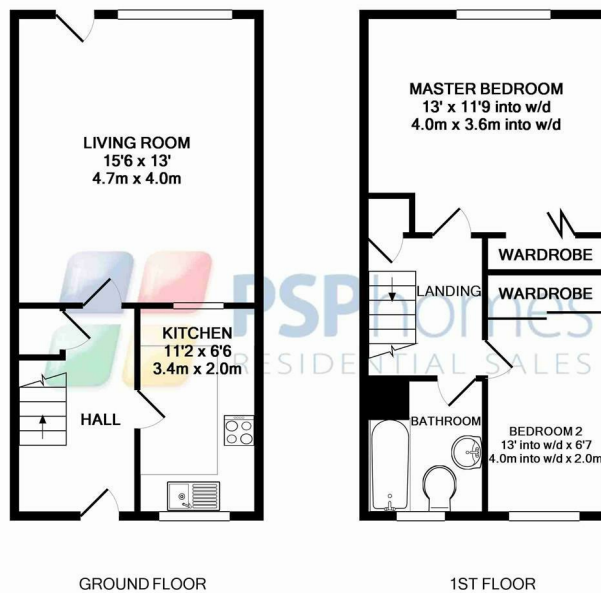
Permitted Fees:

Holding deposit - one weeks rent - £323.07

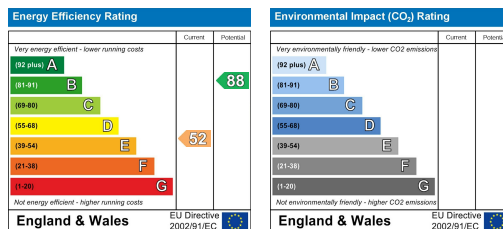
Deposit - five weeks rent - £1615.38

The holding deposit will be refunded against the first month's rent but can be retained if the applicant withdraws from the property, fails the reference checks due to false or misleading information.

Please note, photos taken August 2018.



Plans for illustration purposes only
Made with Metropix ©2010



VIEWING BY APPOINTMENT WITH PSP HOMES
54 Church Road, Burgess Hill, West Sussex, RH15 9AE. TELEPHONE 01444 250999
OPEN SEVEN DAYS A WEEK www.psphomes.co.uk

Much care is taken in the preparation of our particulars, but we cannot guarantee the information given is accurate. Property details are issued a general guide only and may not form any part of an offer or contract. We recommend intending purchasers check details personally.